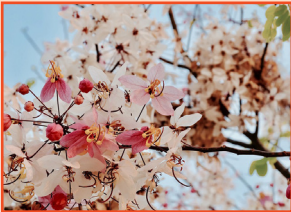


## Khon Kaen University

Khon Kaen University was one of four regional universities, established in 1964 as a part of the decentralized development plan for higher education in the Northeastern part of Thailand. From small beginnings, KKU has grown enormously, more than 17,000 staff in 17 faculties, 3 colleges, 1 school, 2 campuses, 25 research center, a hospital, and academic service centers. There are currently about 40,000 undergraduate and postgraduate students and over 900 international students. KKU's strategic goal is to be recognized both internationally and regionally as a leading university in research.

## Graduate School

Graduate School was established in 1978 with the view to expand the capacity of the University by producing higher qualified graduates, academicians, and researchers. Nowadays, with more than 8,000 graduate students and over 300 full-time students from overseas, Graduate School's mission is to accurately administer and develop graduate programs, rules, and practices, along with running cooperation between the university and other academic institutions. We additionally process students' petition on educational issues and provide effective and friendly services to international students. Currently, Graduate School has more than 240 study programs, 30 international programs.



## Graduate Programs & Structure

### 1) Graduate Diploma & Postgraduate Diploma

The degree has total courses with 24 credits for minimum.

### 2) Master's Degree

The degree has total courses with 36 credits for minimum. It can be divided into two plans:

**Plan A** is a research oriented program, and may be one of two types:

**Type A 1 :** Research oriented; it consists of a thesis course with a minimum credit of 36. The program may assign the study of some courses or non-credit courses but the results should be up to the standard specified by the program.

**Type A 2 :** Research & coursework; it consists of a thesis course with a minimum credit of 12, and other coursework with a minimum credit of 12. The total credits for the whole program should be 36 credits for minimum.

**Plan B** is a non-thesis program but requires at least 3 credits and no more than 6 credits for an independent study. The total credits for the whole program should be 36 credits for minimum including the independent study. The program requires a Comprehensive Examination.

### 3) Doctoral Degree

The total number of credits for the whole program should not be less than 72 credits for those who graduated with a Bachelor Degree or Graduate Diploma, whilst those with a Master's Degree or Postgraduate Diploma should attempt a minimum of 48 credits. The degree can be divided into two types:

**Type 1** is a research oriented program which expands academic knowledge into new areas. The program may assign the study of some courses or non-credit courses but the results should be up to the standard specified by the program.

**Type 1.1 :** Those holding a Master's Degree or equivalent or a Postgraduate Diploma are required to complete a minimum of 48 credits for a thesis.

**Type 1.2 :** Those holding a Bachelor's Degree or equivalent are required to complete a minimum of 72 credits for a thesis.

*\*The thesis in both Type 1.1 and 1.2 must contain the same quality and standards.*

**Type 2** is a research oriented program which requires the students to complete a thesis that is highly academically qualified, and there should be coursework.

**Type 2.1 :** Those holding a Master's Degree or equivalent or a Postgraduate Diploma are required to complete a minimum of 36 credits for a thesis, and study other coursework with a minimum credit of 12.

**Type 2.2:** Those holding a Bachelor's Degree or equivalent are required to complete a minimum of 48 credits for a thesis, and study other course work with a minimum credit of 24.

*\*The thesis in both Type 2.1 and 2.2 must contain the same quality and standards.*

## Types of Programs

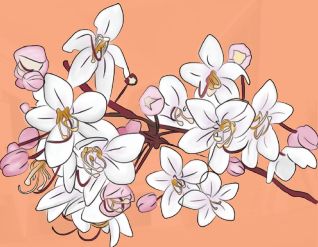
- Regular Program :** the courses are instructed in Thai, while some are instructed in a foreign language.
- English Program :** the program uses English as a medium of teaching and learning, including a thesis and independent study.
- International Program :** the program is international content-based, which is instructed in a foreign language in order to produce graduates according to the international standard.

### Semester System

**First Semester :** August – December  
**Second Semester :** January – May  
**Summer Session :** June – July

### Duration of Study

<b>Graduate Diploma :</b>	minimum 1 year	maximum 3 years	
<b>Master's Degree :</b>	minimum 2 years	maximum 5 years	
<b>Higher Graduate Diploma :</b>	minimum 2 years	maximum 3 years	
<b>Doctoral Degree :</b>	(Holding Bachelor's degree)	minimum 4 years	maximum 8 years
	(Holding Master's degree)	minimum 3 years	maximum 6 years



## Study Areas

### • Faculty of Science

#### Doctoral Degree

Ph.D. in Biology  
Ph.D. in Physics  
Ph.D. in Materials Science and Nanotechnology  
Ph.D. in Applied Mathematics  
Ph.D. in Information Technology (International Program)  
Ph.D. in Biological Science (International Program)

#### Master's Degree

M.Sc. in Mathematics  
M.Sc. in Physics  
M.Sc. in Applied Statistics  
M.Sc. in Computer Science  
M.Sc. in Polymer Science  
M.Sc. in Information Technology  
M.Sc. in Applied Mathematics  
M.Sc. in Chemistry for Teacher  
M.Sc. in Microbiology  
M.Sc. in Forensic Science  
M.Sc. in Materials Science and Nanotechnology

### • Faculty of Agriculture

#### Doctoral Degree

Ph.D. in Animal Science  
Ph.D. in System Approaches in Agriculture  
Ph.D. in Agriculture (International Program)

#### Master's Degree

M.Sc. in Animal Science  
M.Sc. in Animal Science (International Program)  
M.Sc. in System Approaches in Agriculture  
M.Sc. in Agriculture (International Program)

### • Faculty of Engineering

#### Doctoral Degree

Ph.D. in Mechanical Engineering  
Ph.D. in Agricultural Engineering  
Ph.D. in Civil Engineering  
Ph.D. in Electrical Engineering  
Ph.D. in Environmental Engineering  
Ph.D. in Chemical Engineering  
Ph.D. in Industrial Engineering  
Ph.D. in Computer Engineering  
Ph.D. in Energy Engineering

#### Master's Degree

M.Eng. in Electrical Engineering  
M.Eng. in Agricultural Engineering  
M.Eng. in Civil Engineering

### • Faculty of Education

#### Doctoral Degree

Ph.D. in Curriculum and Instruction  
Ph.D. in Educational Technology  
Ph.D. in Mathematics Education  
Ph.D. in Science Education

#### Master's Degree

M.Ed. in Educational Measurement and Evaluation  
M.Ed. in Educational Administration  
M.Ed. in Educational Technology  
M.Ed. in Mathematics Education  
M.Ed. in Science and Technology Education

### • Faculty of Nursing

#### Doctoral Degree

Ph.D. in Nursing Science

#### Master's Degree

M.N.S. in Adult Nursing  
M.N.S. in Family Nursing Practitioner  
M.N.S. in Community Nurse Practitioner  
M.N.S. in Nursing Administration  
M.N.S. in Pediatric Nursing  
M.N.S. in Gerontological Nursing  
M.N.S. in Midwifery  
M.N.S. in Nursing Science (International Program)  
M.N.S. in Psychiatric and Mental Health Nursing

### • Faculty of Medicine

#### Doctoral Degree

Ph.D. in Medical Biochemistry and Molecular Biology  
Ph.D. in Medical Microbiology  
Ph.D. in Medical Physiology  
Ph.D. in Parasitology  
Ph.D. in Neuroscience  
Ph.D. in Medical Biochemistry and Molecular Biology (International Program)  
Ph.D. in Community Health Development  
Ph.D. in Tropical Medicine (International Program)

#### Master's Degree

M.Sc. in Parasitology  
M.Sc. in Medical Biochemistry and Molecular Biology  
M.Sc. in Medical Microbiology  
M.Sc. in Medical Biochemistry and Molecular Biology (International Program)  
M.Sc. in Neuroscience  
M.Sc. in Community Health Development  
M.Sc. in Occupational Medicine  
M.Sc. in Radiological Technology

#### Higher Graduate Diploma in Clinical Medical Sciences

Family Medicine  
Pediatrics  
Medicine  
Emergency Medicine

### • Faculty of Humanities and Social Sciences

#### Doctoral Degree

Ph.D. in Development Science  
Ph.D. in Information Studies  
Ph.D. in Sociology  
Ph.D. in Development Science (International Program)  
Ph.D. in Public Administration  
Ph.D. in Eastern Philosophy and Religion  
Ph.D. in Applied Linguistics (International Program)  
Ph.D. in Thai

#### Master's Degree

M.A. in Sociology  
Master of Information Science  
M.A. in Social Development  
M.A. in Philosophy  
M.A. in English  
M.A. in Mekong Studies  
M.A. in Thai  
M.A. in Public Administration  
M.A. in Chinese Language and Culture

### • Faculty of Associated Medical Science

#### Doctoral Degree

Ph.D. in Human Movement Sciences  
Ph.D. in Human Movement Sciences (International Program)  
Ph.D. in Medical Technology  
Ph.D. in Medical Science

#### Master's Degree

M.Sc. in Medical Science  
M.Sc. in Physical Therapy  
M.Sc. in Physical Therapy (Special Program)  
M.Sc. in Clinical Pathology and Management (Special Program)  
M.Sc. in Medical Technology

### • Faculty of Public Health

#### Doctoral Degree

Ph.D. in Public Health  
Ph.D. in Public Health (International Program)  
Ph.D. in Epidemiology and Biostatistics (International Program)

#### Master's Degree

M.P.H. in Environmental Health  
M.P.H. in Biostatistics  
Master of Public Health Program  
M.P.H. in Nutrition for Health  
M.P.H. in Public Health Administration  
M.P.H. in Health Education and Health Promotion  
M.P.H. in Epidemiology  
Master of Public Health (International Program)  
M.P.H. in Occupational Health and Safety

### • Faculty of Dentistry

#### Doctoral Degree

Ph.D. in Oral Sciences

#### Master's Degree

M.Sc. in Dental Research  
M.Sc. in Dentistry  
M.Sc. in Prosthodontics (International Program)

#### Higher Graduate Diploma

Oral and Maxillofacial Surgery  
Pediatric Dentistry

### • Faculty of Pharmaceutical Sciences

#### Doctoral Degree

Ph.D. in Research and Development in Pharmaceuticals  
Ph.D. in Pharmacy and Health System

#### Master's Degree

M.Sc. in Aesthetic Sciences and Health  
M.Sc. in Toxicology  
M.Sc. in Thai Traditional Pharmacy

#### Graduate Diploma

Grad. Dip in Pharmacotherapy

### • Faculty of Technology

#### Doctoral Degree

Ph.D. in Food Technology  
Ph.D. in Biotechnology  
Ph.D. in Geotechnology

#### Master's Degree

M.Sc. in Geotechnology  
M.Sc. in Food Technology  
M.Sc. in Biotechnology  
M.Sc. in Food Safety and Quality Management (International Program)

M.Sc. in Industrial Biotechnology (International Program)

### • Faculty of Veterinary Medicine

#### Doctoral Degree

Ph.D. in Veterinary Science  
Ph.D. in Veterinary Science (International Program)

#### Master's Degree

M.Sc. in Veterinary Science  
M.Sc. in Veterinary Science (International Program)  
M.Sc. in Interdisciplinary Veterinary Science  
M.Sc. in Interdisciplinary Veterinary Science (International Program)  
M.Sc. in Veterinary Public Health (Special Program)

#### Graduate Diploma

Grad. Dip in Veterinary Clinic in Companion Animal

### • Faculty of Architecture

#### Doctoral Degree

Ph.D. in Urban and Regional Planning

#### Master's Degree

M.Arch. in Industrial Design

### • Faculty of Business Administration and Accountancy

#### Doctoral Degree

Ph.D. in Business Administration Program  
Ph.D. in Tourism and Hospitality Innovation Management

#### Master's degree

Master of Accountancy  
M.B.A. in Logistics Management

### • Faculty of Fine and Applied Arts

#### Doctoral Degree

Ph.D. in Culture Fine Arts and Design  
Ph.D. in Music



- Master's Degree

M.F.A. in Culture, Fine Arts and Design  
M.F.A. in Music  
M.F.A. in Visual Arts
- Faculty of Economics

Master's Degree  
M.Econ. in Business Economics
- Graduate School

Doctoral Degree  
Ph.D. in Exercise and Sport Sciences

Master's Degree  
Master of Rural Development Management (International Program)  
M.Sc. in Exercise and Sport Sciences  
M.B.A. in Intellectual Property and Innovation Management
- College of Graduate Study in Management

Master's Degree  
Master of Business Administration
- College of Local Administration (COLA)

Doctoral Degree  
Ph.D. in Public Affairs Management (International Program)

Master's Degree  
Master of Public Administration
- Nongkhai Campus

Doctoral Degree  
Ph.D. in Telecommunication, Electronics, and Computer (International Program)  
Ph.D. in Applied Bioresource Science (International Program)

Master's Degree  
M.Eng. in Telecommunication, Electronics and Computer Engineering (International Program)  
M.Sc. in Applied Bioresource Science (International Program)  
M.B.A. in Entrepreneurship and Innovation  
M.B.A. in Entrepreneurship and Innovation (Special Program)

List of Tuition Fee in Accordance with Khon Kaen University Announcement 891/2018

on Tuition Fee for Postgraduate Program A.D. 2018

Attachment 4 Tuition Fee for Postgraduate Program: Full-Time Program (Foreign Currency)

1. Application Fee

1.1 Application fee per subject area 40 USD

2.Tuition Fee /each semester (USD)

Subject Fields	Program of Study			
	Regular Program		International & English Program	
	Master's Degree/ Graduate Diploma	Doctoral Degree/ Higher Graduate	Master's Degree	Doctoral Degree
Group 1 - Faculty of Fine and Applied Arts: program in Culture Fine Arts and Design, in Music, in Visual Arts - Faculty of Humanities and Social Sciences: all programs (except Foreign Language program) - Faculty of Education: all programs (except program in Educational Technology and in Science and Technology Education) - International College: program in Humanities and Social Sciences - Faculty of Pharmaceutical Science: Graduate Diploma Program in Pharmacotherapy - Graduate School: program in Intellectual Property and Innovation Management and in Rural Development Management	640	840	1,340	2,000

Group 2 - Faculty of Applied Science and Engineering (Nong Kai Campus): program in Telecommunication, Electronics and Computer and program in Applied Bioresource Science	700	1,000	700	1,000
Group 3 - Faculty of Science: all programs (except PhD program in Computer Science and PhD program in Information Technology) - Faculty of Medicine: pre-clinic and clinic programs - Faculty of Associated Medical Science: all programs (For Thai student) - Faculty of Pharmaceutical Science: program in Clinical Pharmacy, in Health Consumer Protection and Health Management and in Pharmacy and Health System - Faculty of Veterinary Medicine: all programs - Graduate School: program in Exercise and Sport Sciences and in Biomedical Sciences (For Thai)	840	1,000	840	1,000
Group 4 Faculty of Agriculture: all programs	840	1,000	1,000	1,340
Group 5 - Faculty of Technology: program in Biotechnology, in Geotechnology, in Food Technology, in Industrial Biotechnology and in Food Safety and Quality Management (for Thai student)	840	1,000	1,170	1,500
Group 6 - Faculty of Technology: program in Biotechnology, in Geotechnology, in Food Technology, in Industrial Biotechnology and in Food Safety and Quality Management (for international student)	840	1,000	1,500	1,840
Group 7 - Faculty of Science: PhD program in Computer Science and PhD program in Information Technology	-	1,000	-	1,840
Group 8 - Faculty of Nursing: all programs - International College: programs in science	840	1,000	1,670	2,170
Group 9 - Faculty of Business Admission and Accountancy: all programs - Faculty of Economics: all programs - Faculty of Business Administration (Nong Khai Campus): all programs - Faculty of Humanities and Social Sciences: Foreign Language program - Faculty of Education: program in Educational Technology and in Science and Technology Education - Faculty of Liberal Arts (Nong Khai Campus)	840	1,000	1,670	2,500
Group 10 - Faculty of Engineering: all programs - Faculty of Pharmaceutical Science: program in Pharmaceutical Chemistry and Natural Products, in Toxicology, in Pharmaceuticals, in Research and Development in Pharmaceuticals, and in Thai Traditional Pharmacy	1,000	1,250	1,000	1,250

Group 11 - Faculty of Architecture: program in Architecture, in Urban and Regional Planning, in Building Technology, in Industrial Design	1,000	1,250	1,670	2,170
Group 12 - Faculty of Public Health: all programs	1,000	1,670	1,670	2,170
Group 13 - Faculty of Dentistry: Non-Clinical programs and higher diploma programs	1,000	1,670	1,670	2,670
Group 14 - Faculty of Associated Medical Science (for international student) - Program in Biomedical Sciences (for International student)	1,170	1,500	1,170	1,500
Group 15 - Faculty of Dentistry: Clinical programs	1,670	2,670	2,000	3,340

2. Tuition Fee for Summer Semester: half of the regular semester
3. Oversea Student Fee: 500 USD
4. Maintaining Student's Status: 85 USD for each semester (\*Oversea student fee is to be paid)
5. Examination Fee per each examination (USD) as follows:

Examinations	Program of Study	
	Regular Program	International & English Program
5.1 Comprehensive Examination (Master's Degree)	10	30
5.2 Thesis or Independent Study Defense (Graduate Diploma, Master's Degree, or Higher Graduate Diploma)	15	45
5.3 Qualifying Proficiency Examination (Doctoral Degree)	15	45
5.4 Thesis Defense (Doctoral Degree)	30	90

Personal Payment

Accommodation

There are a lot accommodation off-campus with reasonably price which are in good condition and very closed to the university, food center, and other services (the rental rate excludes deposit).

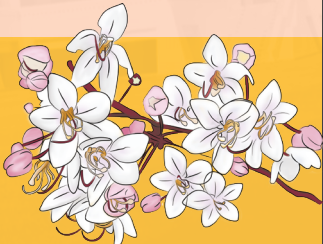
1. Private Dormitory/Apartment: Furnished bed, wardrobe and table, private bathroom, WiFi and telephone line.
2. Fan: Rental 2,500 – 3,000 Baht/month (84-100 USD)

Living Cost

In addition to accommodation, actual expenditure will depend upon lifestyle. However, it should be budgeted between 7,000 – 9,000 Baht (240-300 USD) each month for additional expenses: food, utilities (electricity, telephone), transportation and other miscellaneous personal expenditure.

Graduate School, Khon Kaen University

123 Mittraparp Rd., Muang Khon Kaen, Khon Kaen 40002 Thailand  
Tel. (66) 4320 2420 Ext. 42426, 42436 Fax. (66) 4320 2421



Graduate School

Khon Kaen University, Thailand

Postgraduate Studies



Contact:

Email: [graduate@kku.ac.th](mailto:graduate@kku.ac.th) Website: <http://inter.gs.kku.ac.th>

Graduate School, Khon Kaen University

3<sup>rd</sup> Floor, Bimala Kalakicha Building, 123 Mittraphap Road, Muang Khon Kaen,  
Khon Kaen 40002, THAILAND Tel: (+66)-043-202420 Fax: (+66)-043-202421